



**Karonhienhawe Linda Delormier  
lonhni:io Consulting**

**Kahnawake CCP Coordinator**

# Shared Vision Statement

*In 2029, Kahnawà'kehíró:non know, understand and live our roles and responsibilities as Onkwéhón:we. Onkwéhonwéhinéha (Kanien'kéha) is the main language of communication in the home and community. Through our language and the daily practice of our culture we promote our strong collective identity. Kaianere'kó:wa, with its teachings of Skén:nen, Ka'satsténhsera and Ka'nikonhri:io, is our guiding principle.*

*Kahnawà:ke is a socially, politically and spiritually unified community. All Kahnawà'kehíró:non respectfully co-exist harmoniously and peacefully in a clean and safe environment. We are a community of close-knit families maintaining our connection with each other; where elders are admired, treasured and called upon; where children are safe, provided guidance and loved. We are well on the path to healthy mind, body and spirit. We live and teach our spirituality through our ceremonies and festivals as a way of elevating our spirit.*

*Kahnawà:ke is an independent self-governing community in control of our opportunities. All people are treated equally. The people are the government and have a voice in the direction of the future. We are an economically self-sufficient community with an expanded land base, where individuals are provided opportunities and encouraged to succeed. All Kahnawà'kehíró:non are well- and fully-educated in mainstream and Onkwéhón:we philosophies, confident in who we are.*

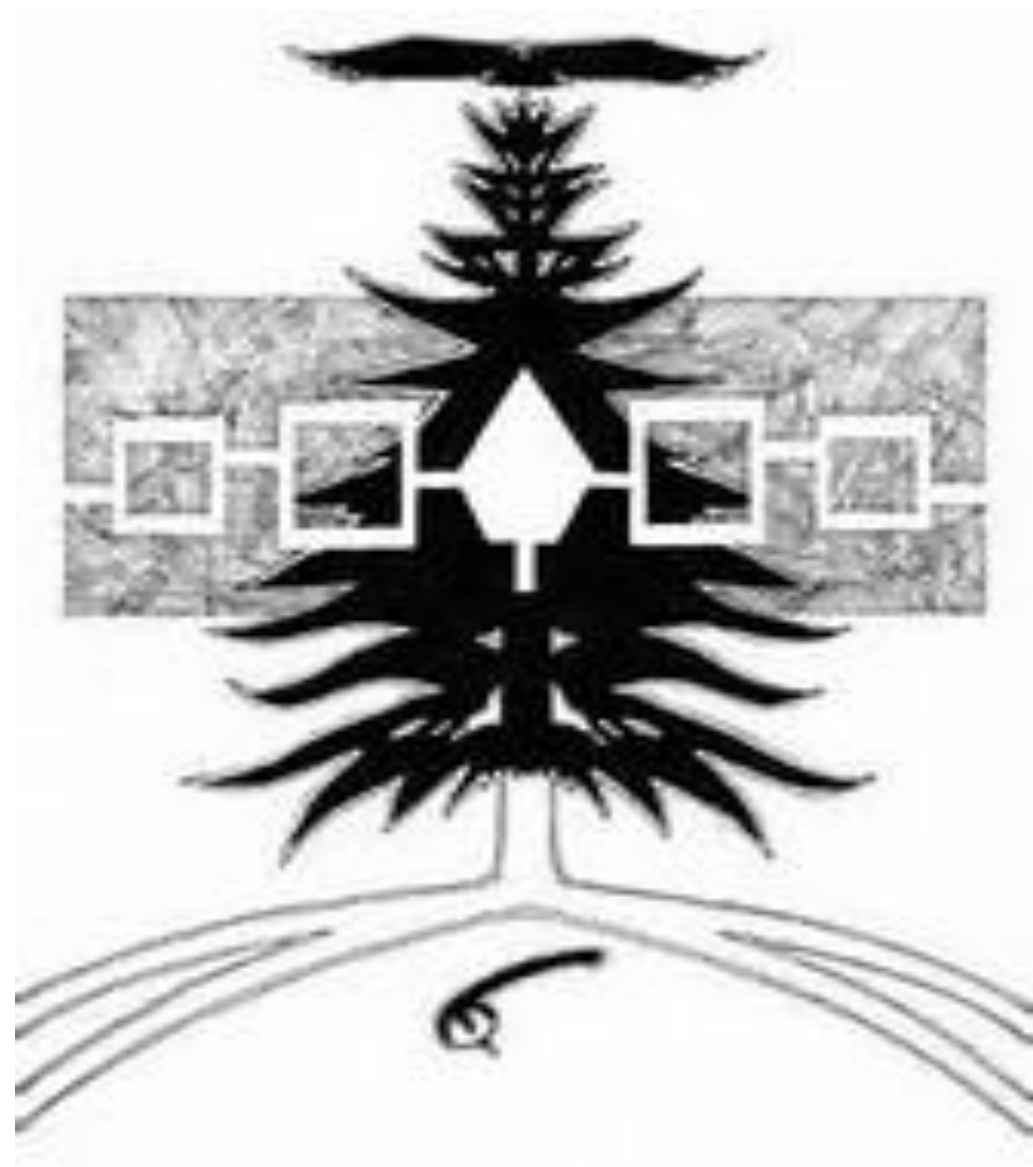
*We live in respectful co-existence with the peoples of the world and Mother Earth. We protect and defend our determination and territory with decisions based on our principles. We are proud and confident about our future.*

# WHY CCP?

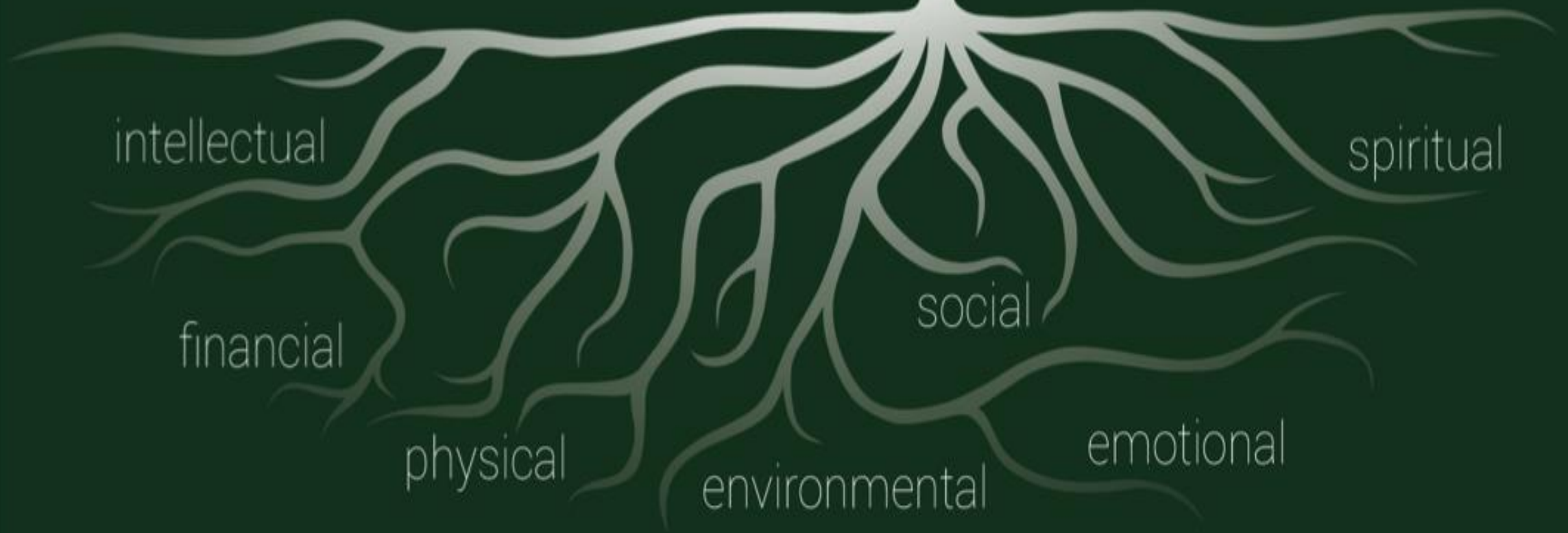
- 2009 Kahnawake Vision
- Indigenous Community Development National Strategy's Four Pillars:
  - 1. Support Community Driven, Nation Based Planning Initiatives and Capacity Building;
  - 2. Support Indigenous to Indigenous Community Learning;
  - 3. Build and Strengthen collaboration and partnerships with and across government department to implement priorities identified by Indigenous Communities, and
  - 4. Strengthen government Awareness of Cultural Diversity
- CCP Success Stories
- Funding Availability

# CCP: HOW WE GOT STARTED

We need to know  
who we are and  
where we have been  
in order to see  
where we are going



# The Thriving Pine & Roots of Wellbeing



# CCP: PRE-PLAN

## MAIN OBJECTIVES

- Ensure the 2009 community vision statement is the foundational component of the preplanning process.
- Identify a project advisory team, develop terms of reference
- Establish a communications approach/strategy and plan for both phases of the planning process
- Develop a strategy for the integration of and/or collaboration with the Collective Impact Project.
- Establish/Develop a variety of ongoing community engagement methods
- Seek level of readiness, willingness and documented commitment from various community organizations, associations and special interest groups.
- Develop, document/create a landscape document/data base for existing community strategies and overall community profile.

# PRE-SEAWAY KAHNAWAKE



General View of the Inayooka Indian Village at Kahnawake, near Montreal.

# SEIGNEURY OF SAULT ST. LOUIS LAND CLAIM

**SSSL COMMUNITY CONSULTATION ON LANDS**

The Mohawk Council of Kahnawà:ke will be consulting the community on the Seigneury of Sault St. Louis (SSSL). How will the loss of SSSL Lands be resolved? Will land be returned to us? Will we receive equal or more land in another area? It is important that you share your opinion on these matters.

The Mohawk Council of Kahnawà:ke will be consulting the community on the Seigneury of Sault St. Louis (SSSL). How will the loss of SSSL Lands be resolved? Will land be returned to us? Will we receive equal or more land in another area? It is important that you share your opinion on these matters.

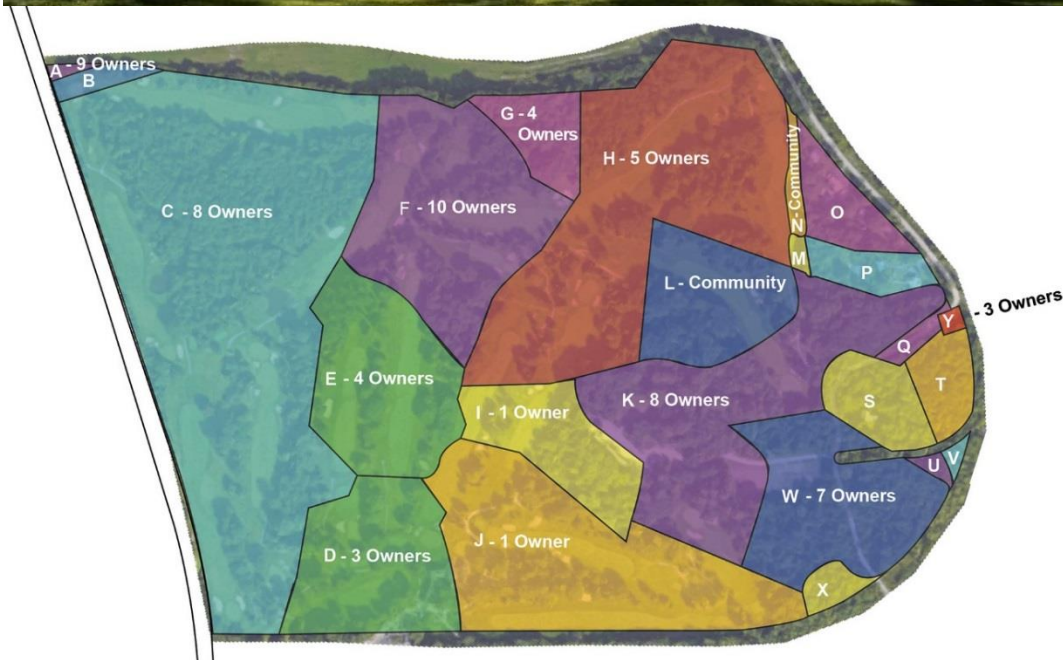
Seigneury of Sault St. Louis

The Mohawk Council of Kahnawà:ke will be consulting the community on the Seigneury of Sault St. Louis (SSSL). How will the loss of SSSL Lands be resolved? Will land be returned to us? Will we receive equal or more land in another area? It is important that you share your opinion on these matters.

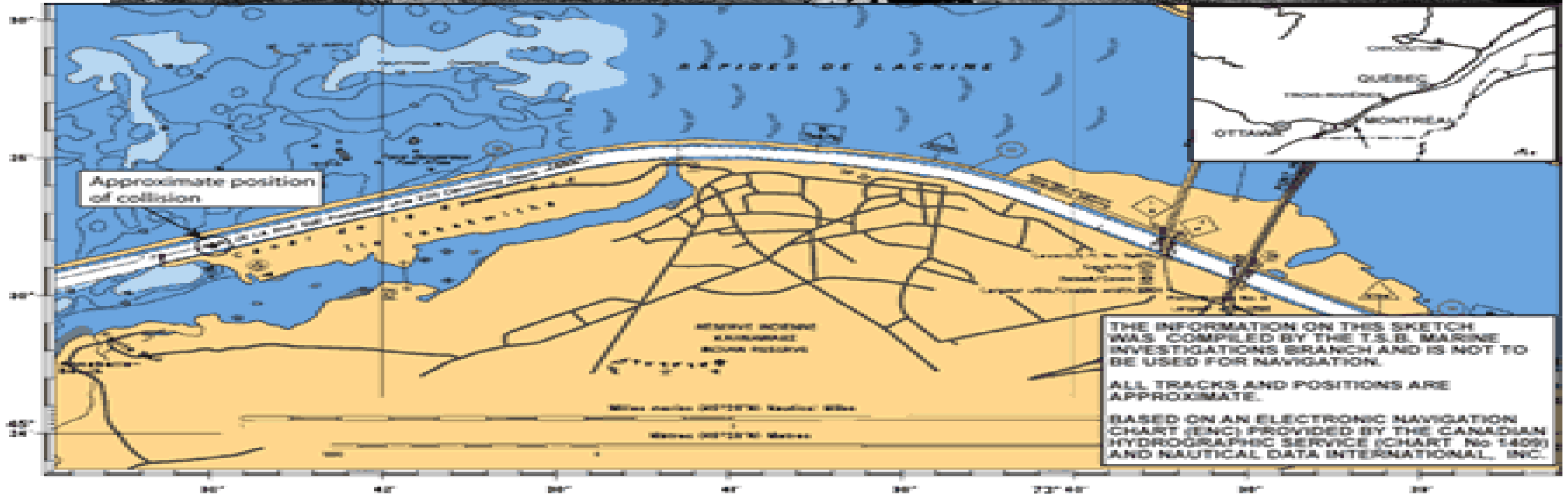


# KANAWAKI

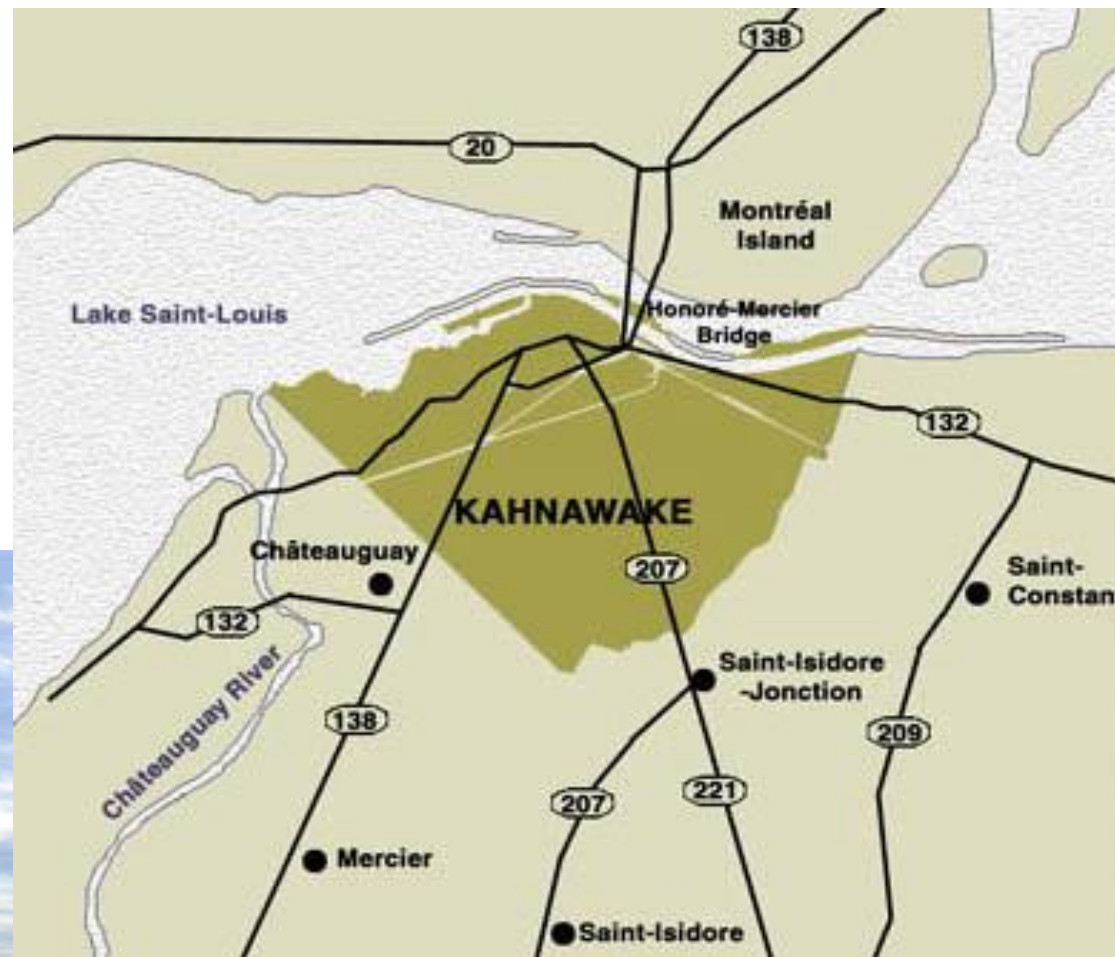
The Kanawaki Golf Club



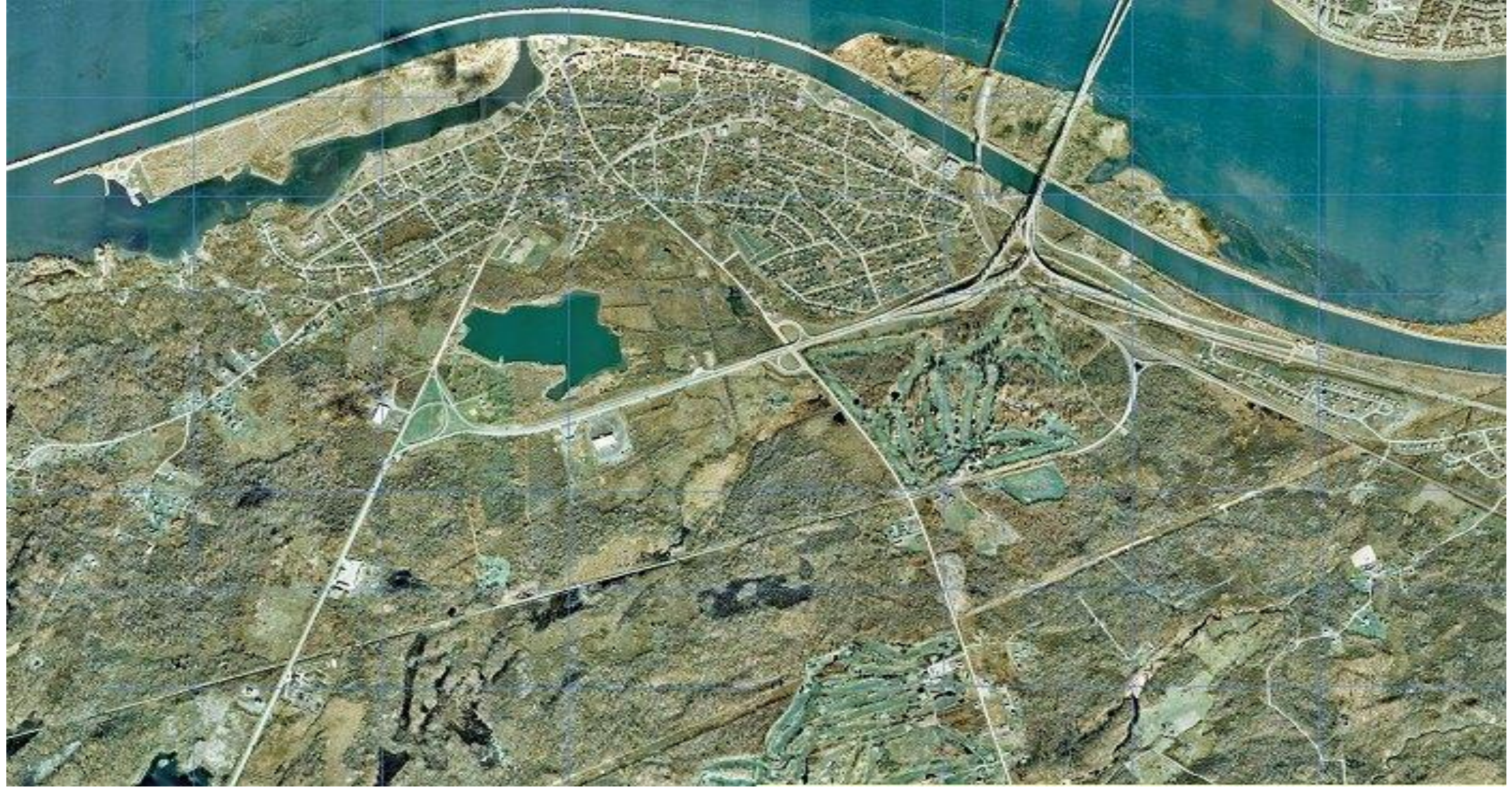
# ST LAWRENCE SEAWAY



# SPECIFIC CLAIMS









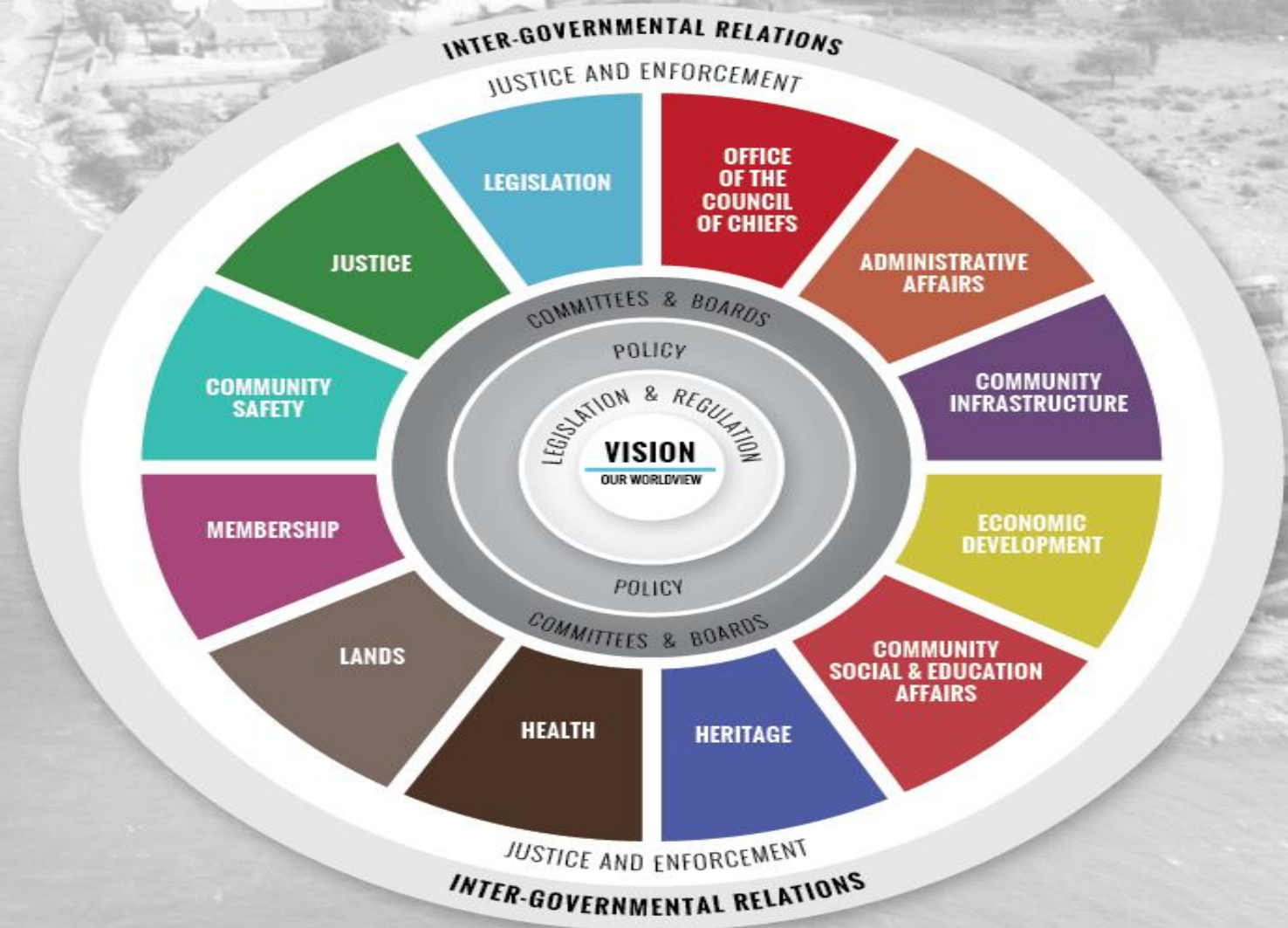
 **Tehsakotitsén:tha**  
Kateri Memorial Hospital Centre



Tsi ionterihwaienhstahkwa ne Kahwatsiranó:ron  
Step By Step Child and Family Center

# KAHNAWÀ:KE GOVERNANCE

## CCP: LANDSCAPE STRUCTURE

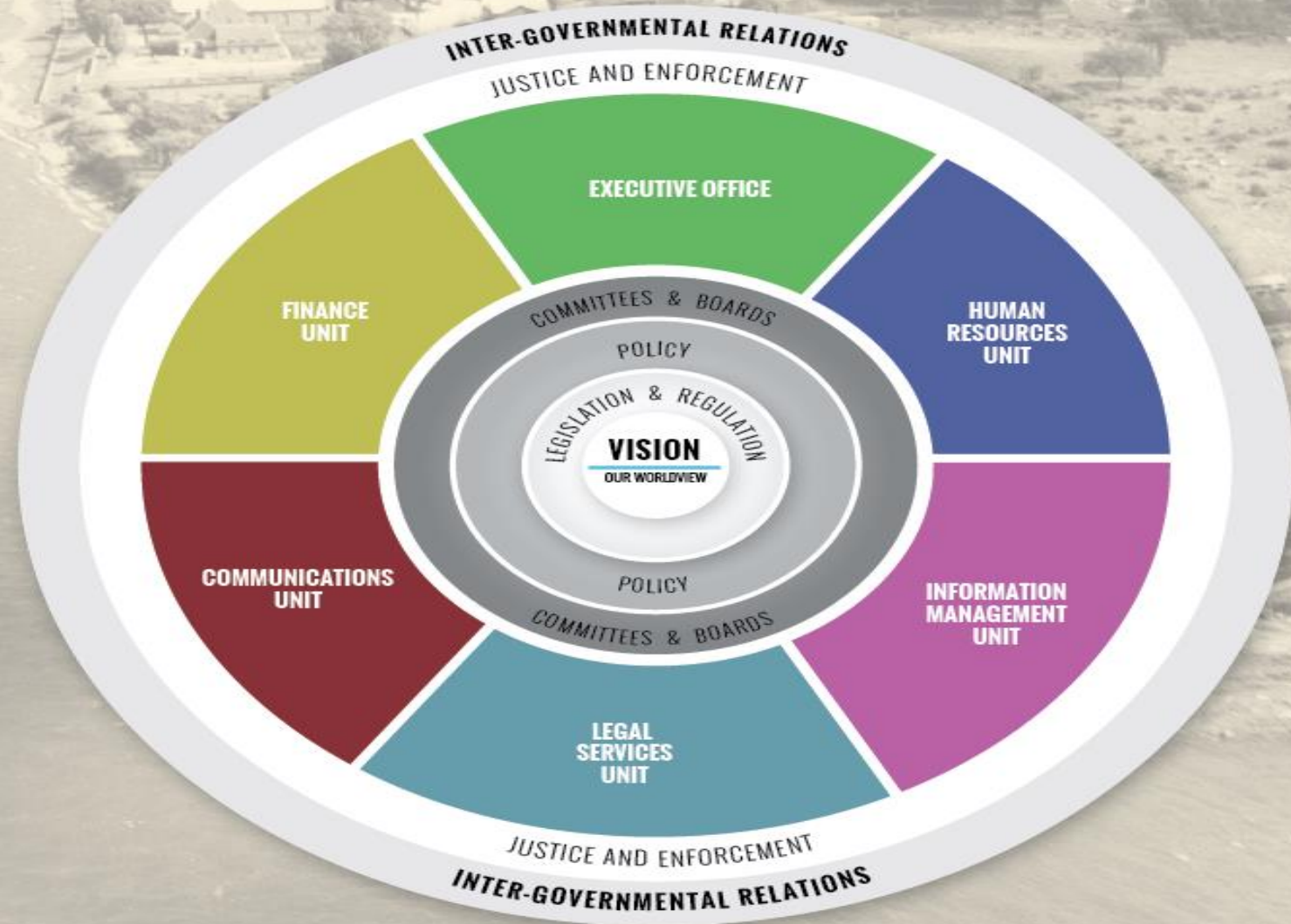


# CCP: LANDSCAPE STRUCTURE

KAHNAWÀ:KE GOVERNANCE



## ADMINISTRATIVE AFFAIRS

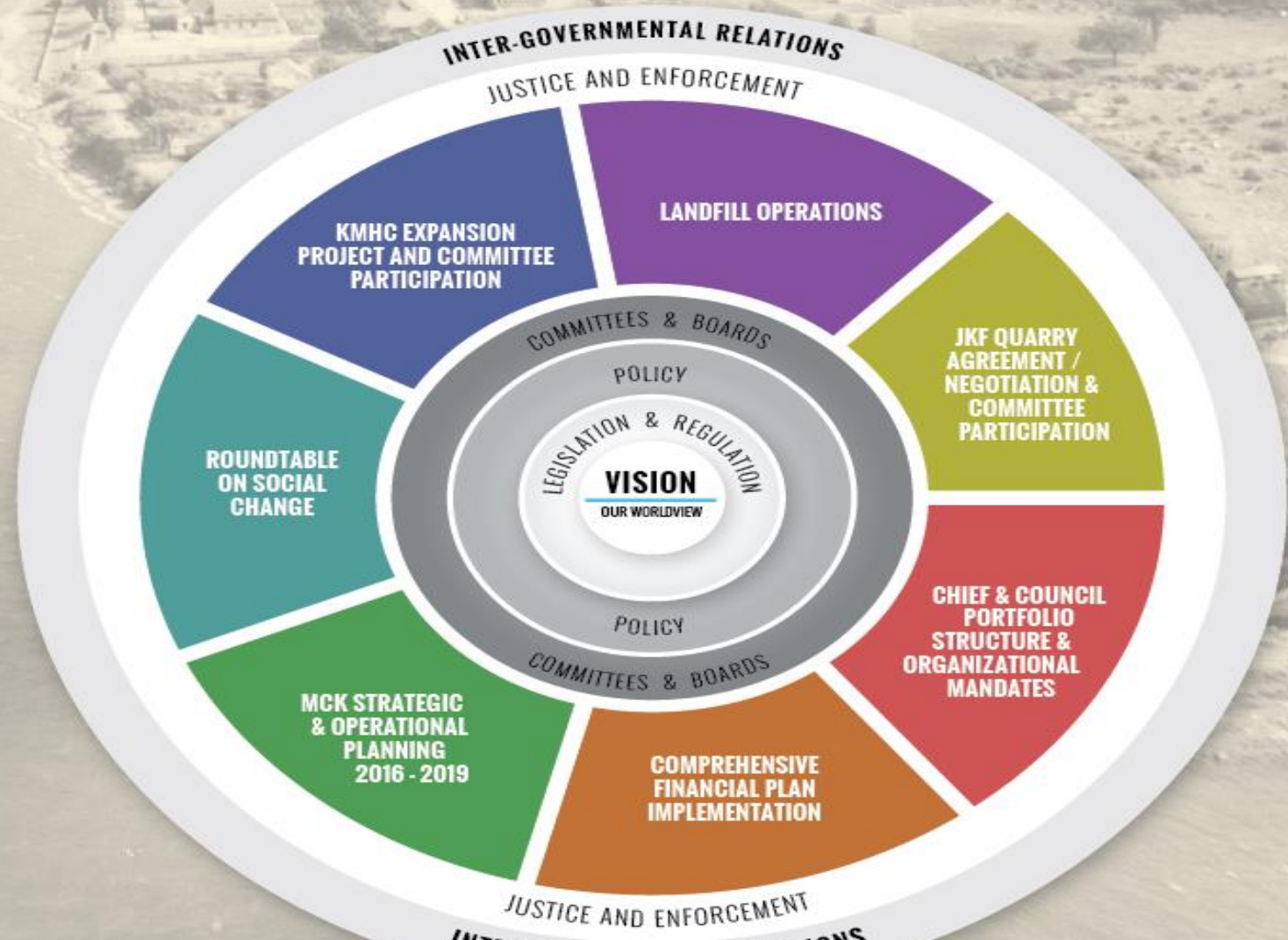


# CCP: LANDSCAPE STRUCTURE

KAHNAWÀ:KE GOVERNANCE

ADMINISTRATIVE AFFAIRS

EXECUTIVE OFFICE



# CCP: Other Community Engagement Activities

Kahnawake Collective Impact

Kahnawake Community Decision Making Process

MCK Capital Infrastructure – Strategic Planning Process

KEC Language and Culture Comprehensive Strategic Planning

MCK Community Land Use Planning Framework Consultation

KOR Language and Cultural Center Strategic Planning

MCK Chiefs Informal Consultation

KOR Language and Cultural Center – New Building Project

KMHC Renovation Project

# KAHNAWAKE COLLECTIVE IMPACT



**Our Voice**  
**Our Future**

---

Creating a Stronger Tomorrow

*Together*

Young Peoples' Gathering  
Friday, August 4th  
Kateri Hall

Call 450-638-3600 to  
*Join the Conversation!*

Hosted by: Kahnawà:ke Collective Impact



**TONIGHT**  
KATERI HALL • 5:00 p.m.

**Kahnawà:ke Collective Impact**

**Our Voice**  
**Our Future**

---

Creating a Stronger Tomorrow

*Together*

# Kahnawà:ke Collective Impact

**WEDNESDAY**  
September 13th  
Kateri Hall  
5:00 - 8:00 p.m.

We are bringing kitchen table talk out into the open, for discussion as a community.

Come and inform yourself about **WHAT** our challenges are and **HOW** we are going to make **COMMUNITY** change together.

**THURSDAY**  
September 14th  
Kateri Hall  
1:00 - 4:00 p.m.

Here are two (2) Gathering opportunities to attend and bring yourself up-to-date on Kahnawà:ke Collective Impact!  
(Refreshments will be served.)

Call 450-638-3600 for more information.

**Our Voice  
Our Future**

Creating a Stronger Tomorrow

*Together*



Kahnawà:ke Collective Impact  
450-638-3600



**Our Voice  
Our Future**

Creating a Stronger Tomorrow

*Together*

**YOUNG  
PEOPLE'S  
GATHERING**

August 4, 2017  
Kateri Hall

Hosted by: Kahnawà:ke Collective Impact & Tewatohnhì'saktha

**My Summary of the Kahnawà:ke  
Collective Impact Youth Gathering**

**By: Jarrett Jacobs, 15**

**B**ack in May, a group of 160 diverse community members gathered to discuss Kahnawà:ke's socioeconomic challenges. The event was a resounding success but there was one apparent void. A key component of our town's economic future was missing: the youth.

There could be no clear solution to the issues we face today, without youth participation. But the problem was resolved last Friday, August 4, at the second gathering of Kahnawà:ke Collective Impact, when about 60 of Kahnawà:ke's most ambitious youth came together to learn about and discuss our economy and social challenges in the community.

The event involved many activities and guest speakers, including chief Kahsennhawe Sky-Deer, who gave an extremely enlightening presentation, as well as opening and closing statements. The cornerstone of the day, however, was an extended speech by Tewatohnhì'saktha CEO, Kyle Delisle. In his address, he made it a point to discuss the changes of the future, and how advancing technology could cause lower-skilled jobs to take a huge hit.

In addition to speeches, there were two group activities that ended off the day. The first activity was a classic brainstorming session, in which teams of six sat and discussed many of Kahnawà:ke's challenges. Once 30 minutes was up, the teams would present their ideas to everyone in the hall.

The second activity was much more "hands-on". Using arts and crafts material, the teams constructed dioramas, drawings and sculptures of what they think Kahnawà:ke will look like in the future. So in the end, through captivating guest speakers and compelling team activities, the group of 60 youth were able to voice their opinions and thoughts in a fun, interesting way. ♦

# KAHNAWAKE COMMUNITY DECISION MAKING PROCESS



# MOHAWK COUNCIL OF KAHNAWAKE CHIEFS INFORMAL CONSULTATION



# CCP/KAHNAWAKE COLLECTIVE IMPACT: AREAS OF CONVERGENCE

- Community Vision Confirmation/Evaluation
- Data Management/Storage
- On-going and Timely Data Collection
- Community Organization/Association - Willingness to Participate
- On-going Community Engagement Model

# CCP: USEFUL ADVICE

- Plan from our worldview. Incorporate identity, language and culture at the outset in all planning processes.
- Work to build trust, even though it seems the process will take longer to do so.
- Plan, plan, plan, but also move forward on identified “areas of convergence” and build as you go.

# CCP: Building Our Future Together

